



Understanding oceans  
Sustaining future



# Progress of China Deep Argo Mission



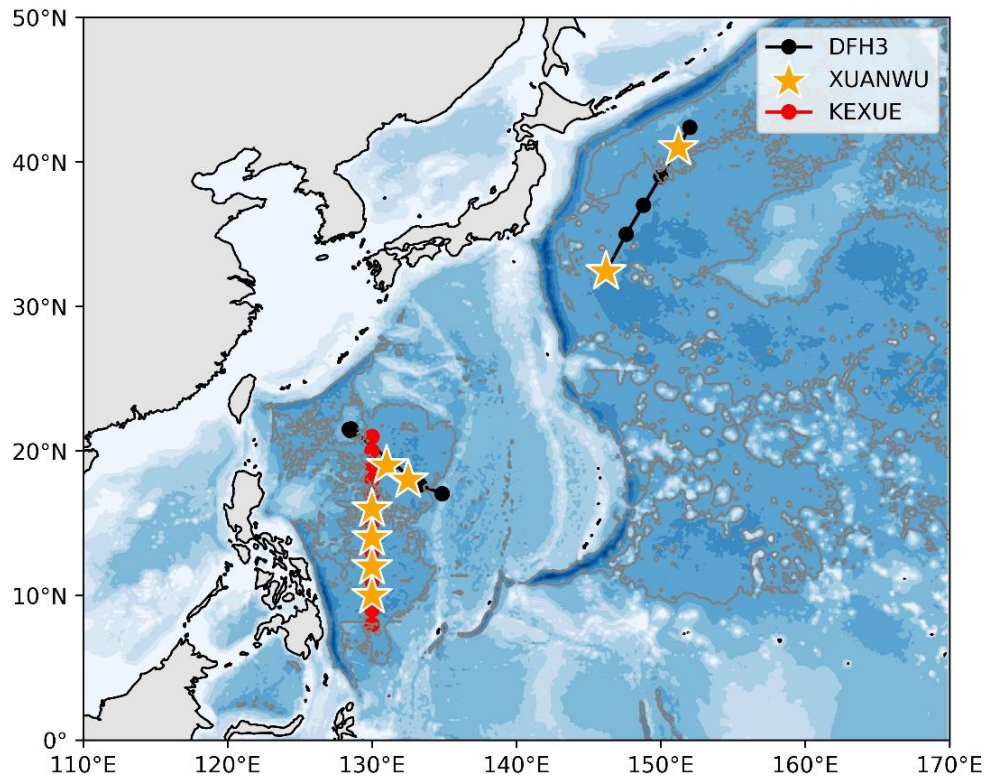
Zhaohui CHEN<sup>1</sup>  
Chong REN<sup>2</sup>  
Zenghong LIU<sup>3</sup>  
Zhiyuan GAO<sup>1</sup>

- 1) Ocean University of China (OUC)
- 2) Laoshan Laboratory
- 3) The Second Institute of Oceanography, Ministry of Natural Resources (CSIO)

2024.3

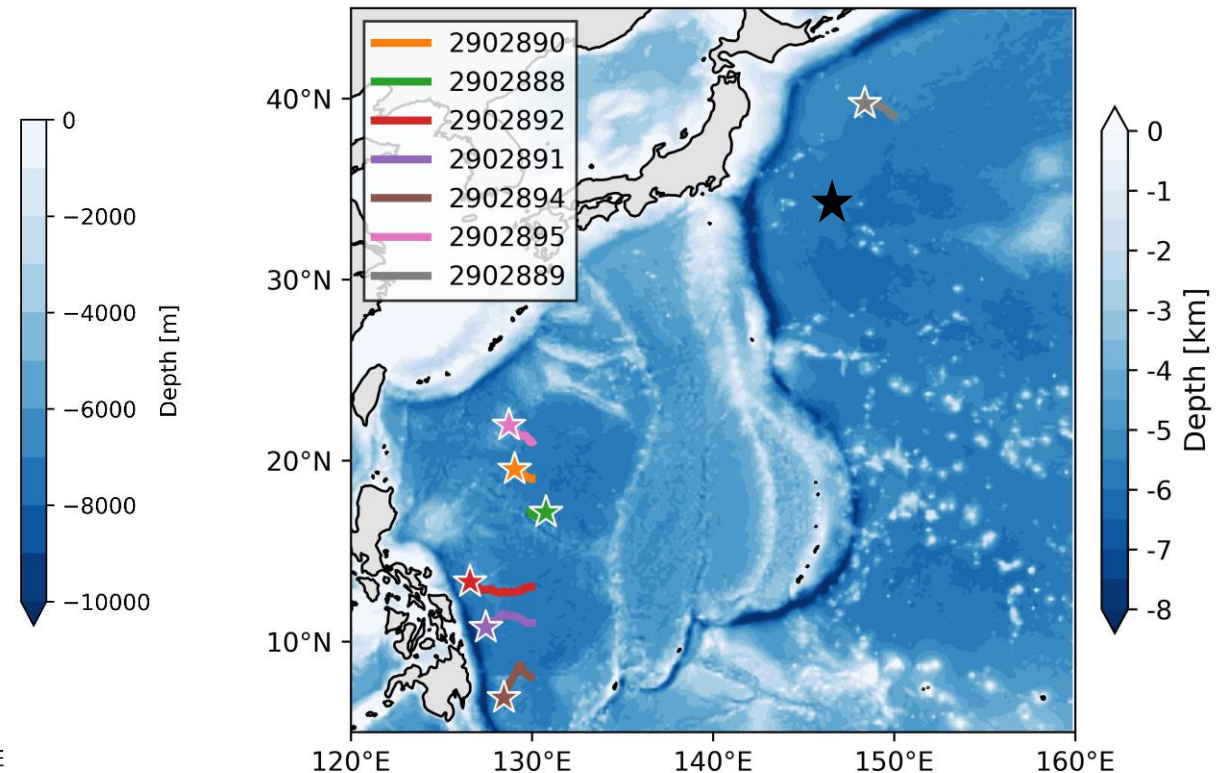
# Deployment plan in 2023

- China plans to deploy 8 **deep** floats
- Cruise in May: 2 in the Kuroshio Extension region and 2 in the Philippine basin
- Cruise in November: 4 in the Philippine basin, western Pacific



# Deployment in 2023

- 2 floats (Xuanwu) deployed in the Kuroshio Extension region but 1 missing and 1 only survived for 14 cycles less than 2000m
- 6 floats (1 HM4000, 5 XUANWU) deployed in the Philippine basin in December.
- CTD cast and on-board salinity measurements were conducted after deployment.

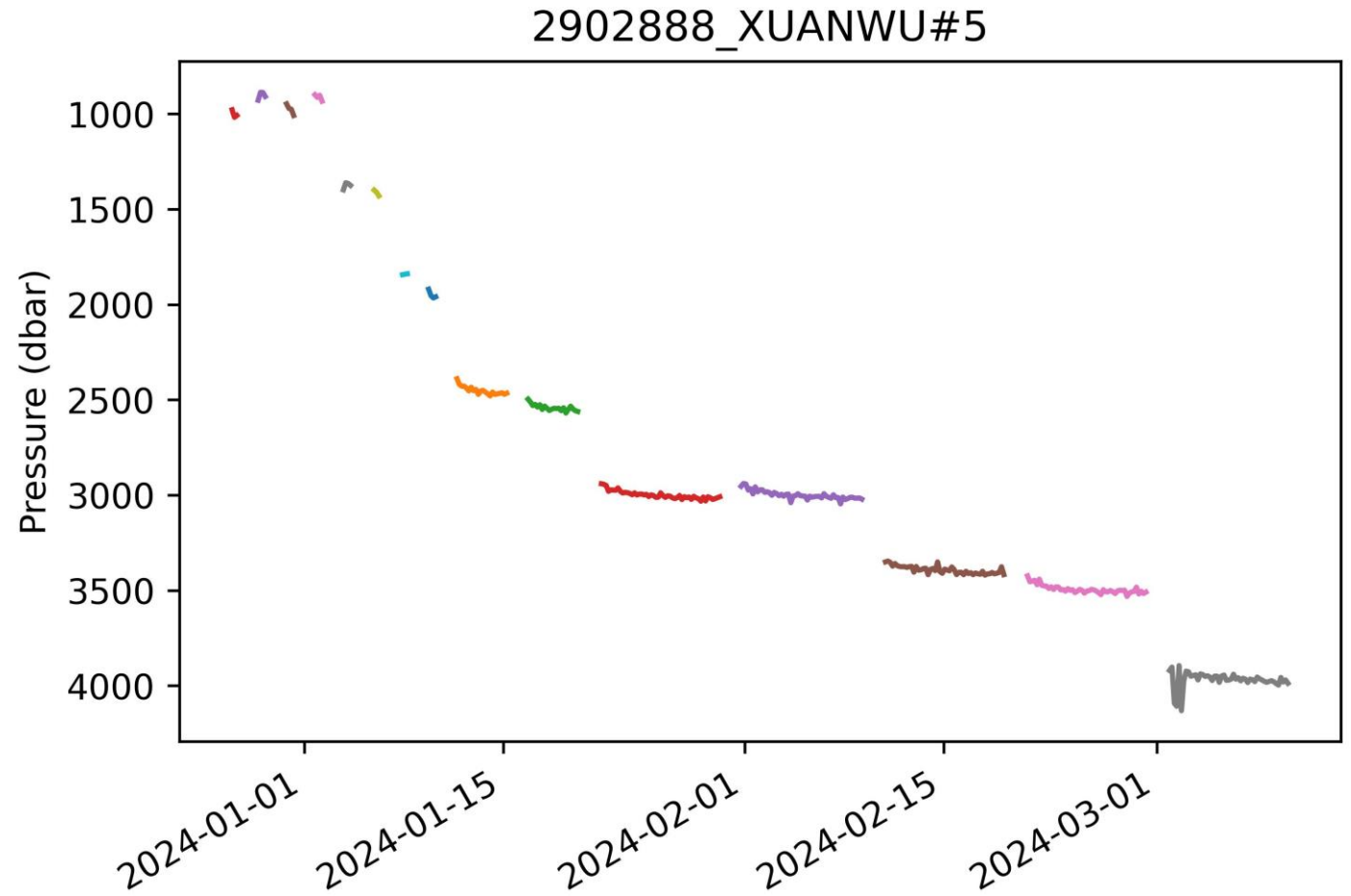
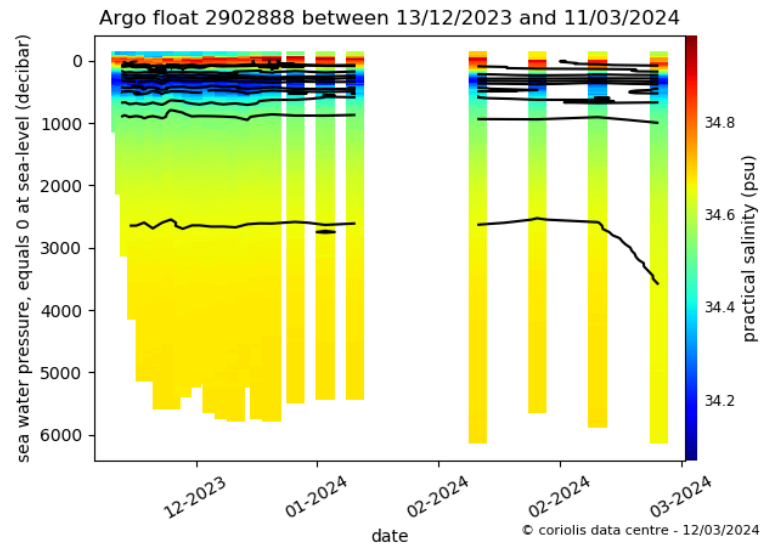
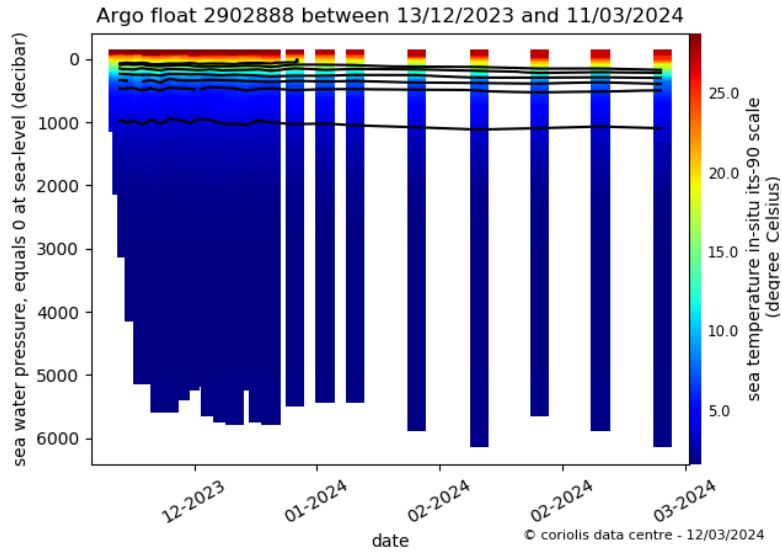


## Current status of each float

Float	Float model	CTD model	Cycle Counts	Current Status	Cycle period (day)	Parking pressure (dbar)	Maximum pressure (dbar)
2902889	XUANWU	SBE61	14	inactive	1	----	2000
2902890	XUANWU	SBE61	22	active	10	700-5000	5966
2902888	XUANWU	SBE61	23	active	10	700-5000	6028
2902892	XUANWU	SBE61	42	active	3	700-5000	6025
2902891	XUANWU	SBE61	42	active	2	700-5000	6026
2902894	XUANWU	SBE61	53	active	2	----	5726
2902895	HM4000	RBR	97	active	1	----	----

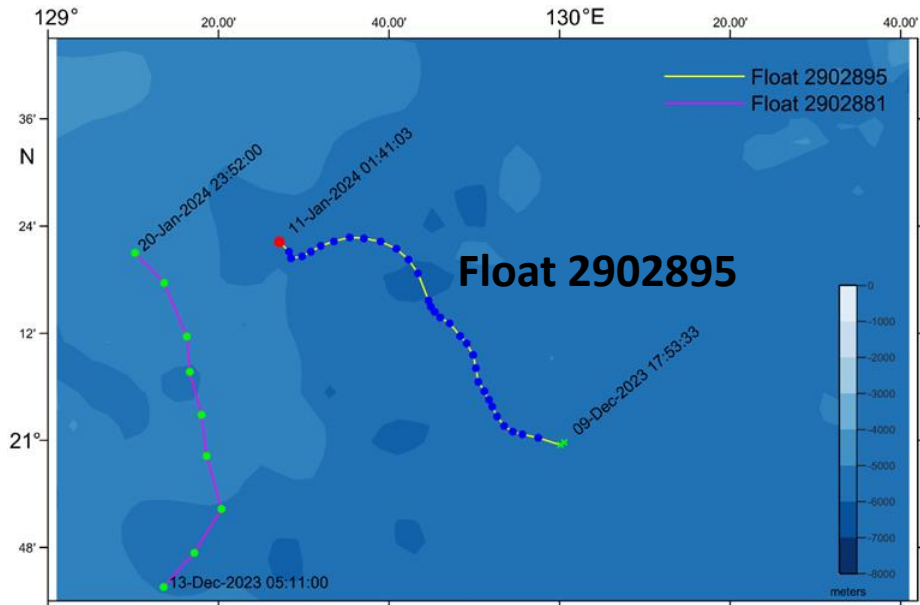
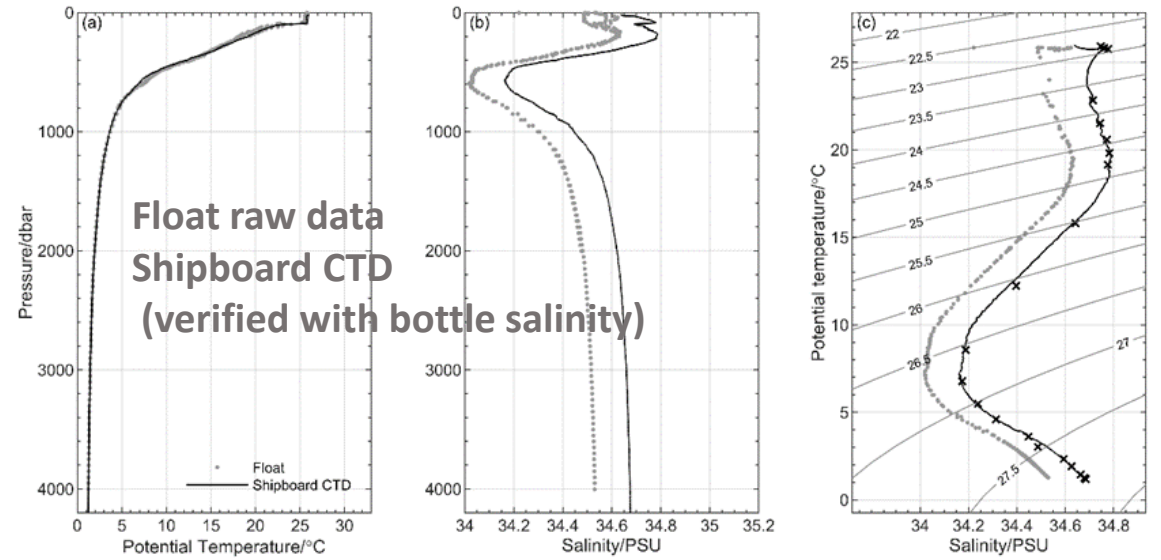


# 1) WMO-2902888 parking depth test

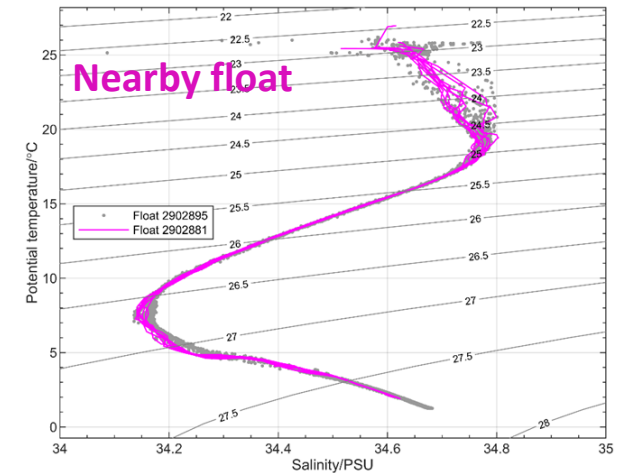
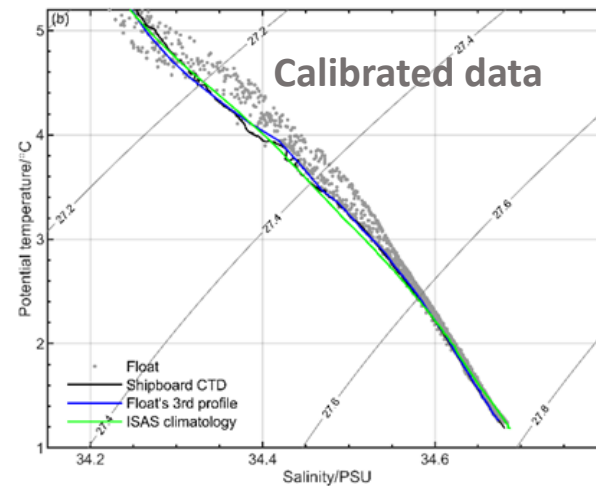


## 2) PSAL calibration of the HM4000 (RBRargo<sup>3</sup> deep 6k)

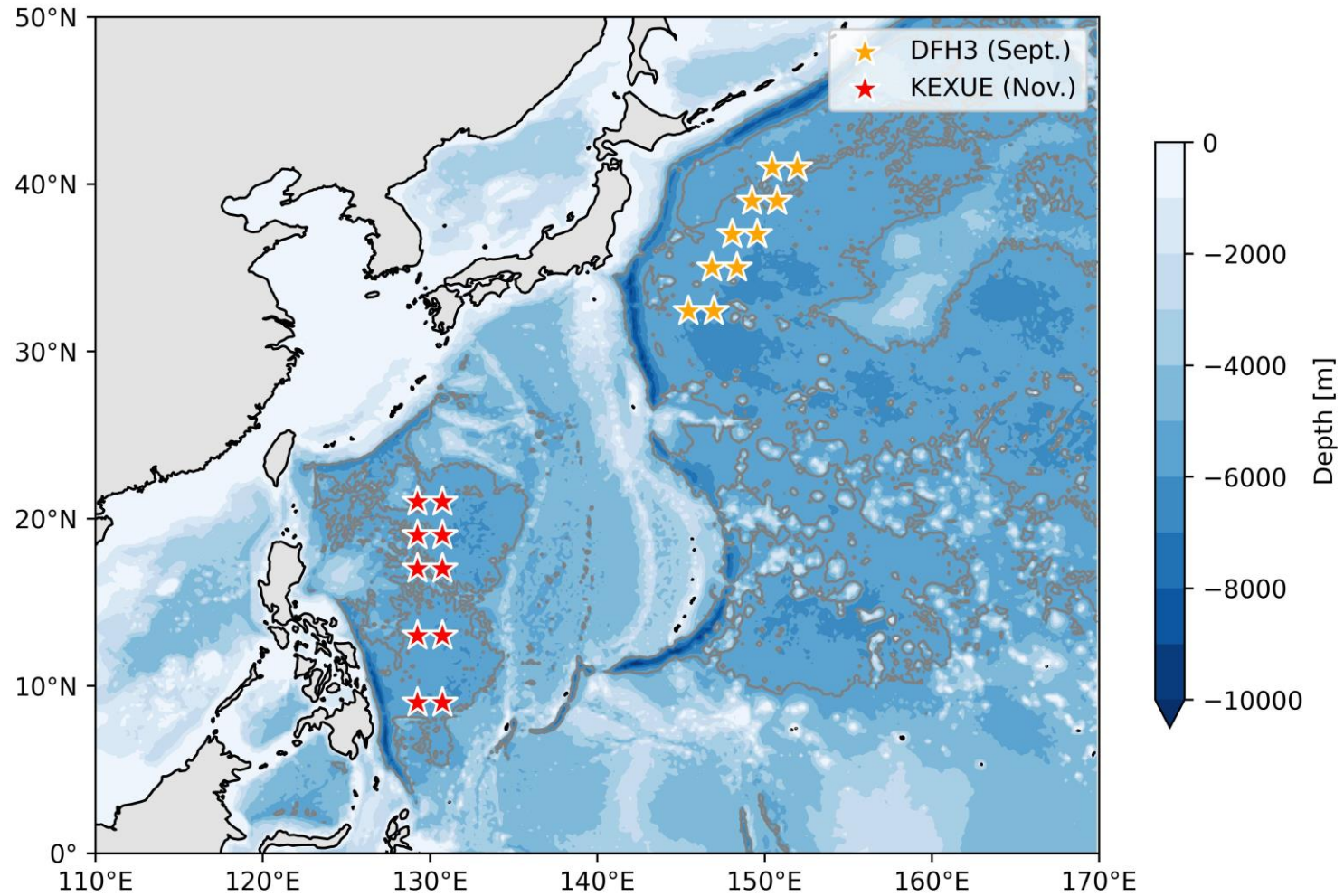
Coating of the conductivity cell had been broken



Conductivity slope=1.0037



# Plan in 2024 (20 Xuanwu floats to be deployed)



Supported by **China Deep Argo Pilot Network** project (60 floats by the end of **2025**)